



CREEK NATURALISATION

Naturalising the Moonee Ponds Creek has long been an aspiration of many, but what would it really take?

See page 2 to learn what we are doing in this space.



IMPROVING RECREATIONAL VALUES

We are co-designing and delivering a project in West Brunswick/Essendon to improve access and enjoyment of the creek corridor.

Find out more on page 3



WORKING GROUPS

The Collaboration has established working groups around some of our priority issues.

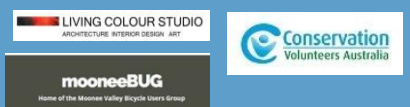
You can read more about these on page 4.



WELCOME

The Chain of Ponds Collaboration (CoP) consists of a number of government and community organisations working collectively to transform the Moonee Ponds Creek into an iconic Melbourne waterway that provides high social and environmental benefits.

This newsletter provides an update of progress towards some of the Collaborations key projects and initiatives.



More information can be found at:
yoursay.melbournewater.com.au/Chain-of-Ponds-Collaboration

MOONEE PONDS CREEK NATURALISATION

Developing a business case

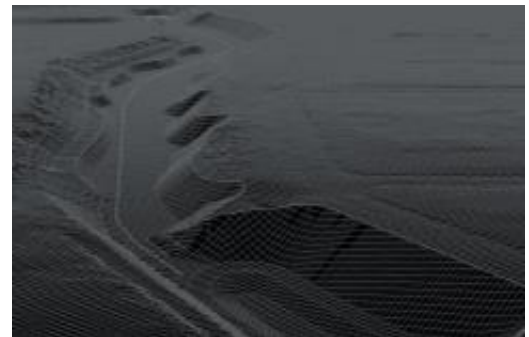
The Moonee Ponds Creek and surrounding areas have been significantly modified since its origins as a 'chain of ponds' before European settlement. Residential and commercial development are now well established on the creeks banks and the banks themselves have been channelized for the fast expulsion of flood waters. How can a more natural creek form be returned which still caters for these new demands? What would it cost?

These questions will form the basis of some investigation work the Collaboration is doing with the assistance of expert hydrological consultants E2 Design Lab in partnership with landscape architects Realm Studios.

The work will focus a 400m stretch of the creek between Margaret and Herbert Streets, Oak Park (Strathmore). The site is symbolic as the location where the march of concrete upstream was halted in the 1980s after a strong community campaign.

The investigation will look at what landscape and engineering interventions are possible to enhance the social and environmental values of the creek and will undertake a cost benefit analysis to provide a more grounded business case for this work. Design concepts are expected to be available for public discussion in August.

This project has been made possible through funding from the State Government, Melbourne Water and Moreland and Moonee Valley Councils.



Improving Recreational Values along the creek

West Brunswick
& Essendon



The Collaboration received funding through the Victorian Government Boosting Recreational Waterway Use Initiative to deliver a project to improve access and amenity along a section of the Moonee Ponds Creek in Essendon/Brunswick West.

Through a process of co-design with the support of landscape architects, Thompson Berrill Landscape Design, a draft landscape plan has been developed to support the project. Works proposed in the plan include:

- Modifications to fencing and path works to support improved access and pedestrian connectivity along the eastern side of the creek
- A shared path connection between Vanberg and Hopetoun Avenue (extending to Moreland Road)
- Installation of amenity infrastructure such as seats and signage
- Revegetation and soft landscaping
- Incorporation of Water Sensitive Urban Design/wetland opportunity to revitalise the old Melville Creek corridor.

The plan is available for public comment until **Tuesday 13th August 2019** on the Chain of Ponds Collaboration Yours Say page (see front for details).

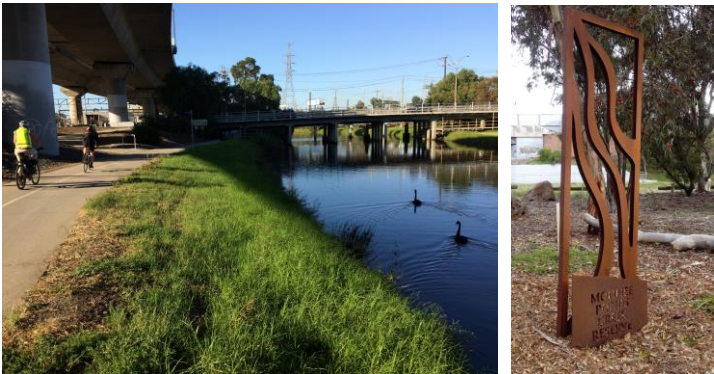


Working groups

To help find solutions to some of our priority catchment issues, we have established working groups that bring together experts in these fields and connect these with CoP objectives.

Design guidelines for the creek are a priority for collaborators. Design guidelines can be applied at two scales. Firstly at a high level, to influence private land development, via the planning system, to protect public land values. And secondly at a more detailed level, through a consistent approach to built structures in the public realm.

To facilitate planning system changes, the **Planning Controls Working Group** are investigating opportunities to have more regulatory tools at their disposal, particularly in the Planning Scheme to protect waterway values through development.



To facilitate connectivity and a sense of cohesive character and identity, the **Trails, Transport and Connectivity Working Group**, are aiming to draft a document that provides guidelines relating to access, facilities, signage, landscape character, lighting and cultural heritage.

Next Chain of Ponds Collaboration meeting:

Thursday 12 September 2019, 9am-12noon
Community Hub at The Dock
Level 1, 912 Collins Street, Docklands
New members welcome

The CoP **Catchment Litter Working Group** has been established to bring together key agencies and community in the war against rubbish in our waterway.

Litter and other illegal rubbish is a huge problem. Not only is it unsightly, it is a risk to aquatic and bird life and contributes to the ocean pollution problem as it enters Port Phillip Bay at the bottom of the catchment.



Over 1 tonne of rubbish was removed from the lower section of the Moonee Ponds Creek in June at a Clean-Up event co-ordinated by Ocean Crusaders. What is more disturbing is that this was less than 6 months after a previous clean up activity which removed similar amounts of rubbish from the same location.

A second clean up is scheduled for September 1. Visit the Ocean Crusaders website for more information.

The problem of litter does not sit with one organisation, it is a catchment wide problem requiring a range of solutions at a number of levels. These include actions aimed at reducing the production of litter and waste in the first instance, collecting it as close to the source as possible and removing it from the waterway before it enters the Bay.

We are currently determining a plan of action and will provide further information soon.