



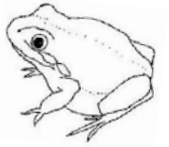
moonee ponds creek
co-ordination committee

Ponderings

Spring 2008

Issue 23

Seasonal Newsletter of the Moonee Ponds
Creek Co-ordination Committee Inc



advocate

educate

interpret

participate

rehabilitate

revegetate

National Tree Day

What a day!

On Sunday 27th July, Australia-wide, volunteers celebrated National Tree day. The Tarnuk, along the Moonee Ponds Creek in Westmeadows has become our traditional local creek site for this festive occasion.

A fantastic turnout despite the rain...

130 volunteers joined The Friends of Moonee Ponds Creek, Melbourne Water, Hume City Council, MPCCC, Waterwatch and local scouts and cubs to plant, play, create and eat!

Over 2000 plants were planted into prepared mulch beds and watered immediately by the steady rainfall.

The rain did not put off our wonderful volunteers who continued to work with big grins and raindrops dripping down their noses!

It wasn't just planting ...

Dorothy Lovett shared her skills with interested volunteers who learned traditional Indigenous basket making techniques using local plants.

Volunteers also explored the land's rich history



Waterwatch is always a hit on festival days. Sam Harrison from Waterwatch helped adults and children alike to see some of the creatures that live in the creek.

And it wasn't just water-bugs ...

While Sam was traversing the creek collecting invertebrates, he came across a Swamp Wallaby and stepped on a fox!! Quite an adventure!

Children made their own creatures

Creative juices were flowing as kids sheltered from the rain under the marquees kindly provided by Melbourne Water.

'**Creeky Creatures**' were created and seed pod birds aplenty were taken home as mementoes of the day. Thanks to Susie Moxey for running these activities.

And there was delicious food...

Our thanks go to Tehia Oner from the Kaayo Oromo

Women's Group for cooking the delicious enjera (lentil filled pancakes), tasty rice and providing the deliciously spiced African coffee that gave everyone some oomph! Our thanks to Trans Pacific Industries for funding these culinary delicacies.

Thank you also to Hume staff Danni, Damien and Bridie for providing the BBQ lunch.

A final and important thank you ...

Coates National Hire have again been very supportive of National Tree Day and provided us with a portable toilet free of charge.



The Moonee Ponds Creek Co-ordination Committee gratefully acknowledge the financial support of these Councils.





Welcome to the newsletter of the Moonee Ponds Creek Co-ordination Committee Inc (MPCCC). We are a not-for-profit, environmentally-based, community organisation that acts as a champion for the Moonee Ponds Creek

and its tributaries. Members of the MPCCC include the Cities of Melbourne, Moonee Valley, Moreland and Hume; the Friends of Moonee Ponds Creek; and representatives from the community.

Our aim is to: encourage understanding of and connection to the Moonee Ponds Creek and its tributaries; highlight its values through education, interpretation and hands-on participation; and revegetate and rehabilitate the creek and its tributaries.

Moonee Ponds Creek Co-ordination Committee Inc

PO Box 2170, Greenvale 3059
 Phone: (03) 9333 2406
 Fax: (03) 9333 2413
 Email: coordinator@mpccc.org
 Website: www.mpccc.org

Moonee Ponds Creek Co-ordination Committee Inc Staff

Coordinator:
Education & Interpretation Officer: Bronwyn Riddell
Greening Officer: Stephanie Spathis
Greening & Admin Assistant: Stella Blay

Moonee Ponds Creek Coordination Committee Members

President: Cr Gary Jungwirth
Vice President: Terry Mundy
Vice President: Eamonn Fennessy
Secretary: Michelle Gooding
Treasurer: Joe Ficarra
Public Officer: Karen Wilson
Members: Vince Aitkin, David Dunstan, Rob Ellis, Cr Mark Higginbotham, Cr Rose Iser, Frank Kinnersley and Julie Law

MPCCC Inc Member Newsletters and Contacts

City of Melbourne

The Green Leaflet, available quarterly. Please contact City of Melbourne on (9658 9658). For environmental and sustainability queries, please contact the Community Sustainability Officer on 9658 8557.

Moonee Valley City Council

Valley View available every six weeks, please contact Moonee Valley City Council on 9243 8888. For environmental and sustainability queries please contact Moonee Valley City Council on 9243 9142.

Moreland City Council

The Moreland City Council website offers numerous tips and information sources on environmental and sustainability issues. Please contact 9240 1167 or info@moreland.vic.gov.au

Hume City Council

Eco-Tracks Environment Newsletter, available quarterly. Contact Environment Administration Officer on 9205 2473, for the newsletter and any environmental and sustainability queries.

Friends of Moonee Ponds Creek

Established in 1997, the Friends Group contribute to the management, protection, development and use of the Moonee Ponds Creek. Contact the President, Kelvin Thomson at Kelvin.Thomson.mp@aph.gov.au.

This newsletter is kindly printed by XL Colour Digital on 100% Recycled paper.

Ponderings ...

This quarter has been a really busy one, with community planting days on every weekend — often both Saturday and Sunday. With your help, we have transformed many areas along the creek, helping to create a connected habitat corridor.

National Tree Day, the Hume Multicultural Planting Day and several other planting sessions, also gave this a boost, and I am very much looking forward to seeing what all these areas look like in a few years.

There have been some more exciting sightings along the creek and in the skies, from eagles to frogs and fungus.

Farewell

We also have to say farewell to Heather. Heather Holder, who has been MPCCC's coordinator for 18 months, has decided it is time to move on. Heather's efficiency will be sorely missed — she did a great job in making sure the office ran smoothly. The Staff and Committee wish her all the best for her future.

Welcome back!

The tawny frogmouths that nest in the big grey box outside our office are back! We'll keep you up-to-date in the next issue, with any offspring that appear.

See all this in colour!

If you have an email address, we can email *Ponderings* to you, and you can see it in all its glory. Please let us know — it will help to save paper, and lower costs. We also welcome feedback and of course any articles or pictures you would like to contribute. Contact us at: ponderings@mpccc.org

Stella Blay

Sandra Simpson was very taken with this poem by Judith Wright, and suggested we include it:

Sun Orchid

Sun orchid, *Thelymitra*,
 what a blue of blues you've chosen
 to remind this sullen season
 that still the sky is there.

Its tender cherishing colour
 is like the hills in summer
 when a eucalyptine vapour
 dreams up in windless air.

Another poet, staring,
 saw the sun in your centre, burning
 core of fire, and, dazzled,
 closed eyes upon that secret.

Wrapped in your Mary-blue,
 veined with a flush like roses,
 you stand in contemplation
 of a spring as cold as winter

but blessed from your creation,
 the calm of your robe encloses
 a gold like revelation.

Judith Wright



Unwelcome visitors — Fruit Flies & Bees

Fruit Fly

Queensland fruit fly

Earlier this year, fruit fly was discovered in the back yard of an Ascot Vale house. If you have found anything suspicious in any of your fruit trees or shrubs or tomatoes, it is very important that you notify the Department of Primary Industry (DPI) on 136 186, or plant.standards@dpi.vic.gov.au.



In the coming two weeks the DPI will be bait spraying in gardens in Kensington and Ascot Vale to try to prevent an outbreak. You may have received a notification in your letterbox if you live in these areas. In Footscray and North Melbourne, the DPI will be putting canite bait blocks into selected trees and bushes. Like the bait spray, the blocks attract and kill the adult flies.

The cool weather is helping, as the fruit fly are less active at this time of the year, but please keep your eyes open for any browning or grubs inside fruit, to prevent an infestation.

There is more information on the DPI website at: www.dpi.vic.gov.au/psb or call 136 186.

Bees

Kaye Oddie spotted this honey bee's nest in a cavity in the cliffs below Union Street.



While honey bees are essential for many agricultural enterprises, and of course their honey, they are not welcome in rock and tree hollows where they prevent native birds, animals and reptiles from nesting.

The non-native bees are also destructive to some plant species. They take the pollen and nectar that native creatures rely on, and can destroy flowers while trying to gain access to their bounty.

Native bees

Native Blue-banded bee



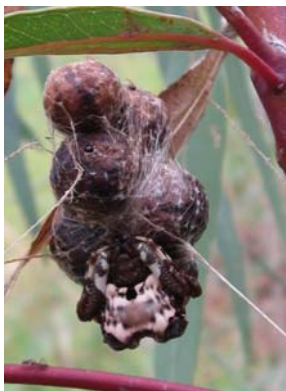
The native **blue-banded bee** must not be confused with the non-native honey bees. Blue-banded bees love the native plants like pelargonium (*Pelargonium australe*) that grows along the Moonee Ponds creek.

Sightings

Fauna observations along the Moonee Ponds Creek. If you see anything interesting contact the newsletter publisher on 9333 2406 or ponderings@mpccc.org

More exciting sightings ...

Have you ever met a **Bird-dropping Spider**? We saw two along the creek at Strath-Oak Planters' Margaret Street site. The huge footballs are its egg sacs. They are beautiful spiders with a very strong web holding their eggs in place. This one has been busy in a young red gum sapling.



It is the time for the **Fairy Wrens** to put on their breeding plumage. This one was hopping about in the oxalis near the creek at Olver Reserve in Pascoe Vale.

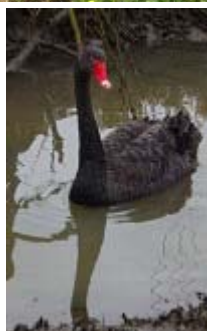


Stephanie Spathis uncovered this fat fellow during a planting day at Pascoe Street. It's a **Pobblebonk** — so called because that's what it says! Bonk ... bonk ... pobble-bonk ...

Its scientific name is *Lymnodynastes dumerilii*, and it's also known as a banjo frog. It likes to live under thick mulch or clumps of vegetation.



The bush crew have also seen **Bunjil** the eagle, flying over Woodlands again, being mobbed by ravens, and at Jacana we saw **Rakali** the water rat nosing amongst the reeds. **Black Swans** have been seen at Lower Moonee Ponds Creek, during the planting day there, at Jacana Wetlands and at Royal Park.



BAT COUNT



Yarra Bend bat counts in June and July continued the downward trend of the previous few months: 10,500 and 10,000 respectively. But the numbers were up again in August to 18,000.

Sandra Simpson was so impressed by the sight of thousands of fruit bats leaving their roost that she wrote a poem for *Ponderings*. (see page 5)

The next count is on Wednesday 10 September at 5.45 pm. Everyone is welcome to join. For further information please contact Dr Rodney van der Ree, on 8344 3661 or 0412 562 429

Friends of Royal Park—Spring Bird Survey — Sunday 28 September, 9am-11am

Would you like to help with bird surveys in Royal Park? This will be the fifth of six bird surveys for 2008. Please contact Gabrielle Stannus on (AH) 9329 2801 or gabstar3003@yahoo.com

Meet at the car park adjacent to Trin Warren Tam-boore (Royal Park Wetlands) Manningham St, Parkville (Melways 29 C12)

Winter Planting Season Highlights

It has been a very busy three months with one planting day every weekend, and sometimes two. These days are very enjoyable; as one volunteer said, community planting days are about more than the plants, they are as much about establishing links with the community and making friends.

Boeing Reserve Troopers

A big gathering with 1st Pascoe Vale South Guides and 1st Oak Park Scout Group helping as well. A great day, everyone pitched in to plant and water 600 grasses and 25 shrubs.

Strath-Oak Planters

There have been three planting days in this area all of them very special. Four first-time planters and some familiar faces came to the first one, including Rock, who was passing on his bike and stopped to join in. He has since become one of our regulars! 100 shrubs were planted, staked and guarded.

There was a fantastic community spirit in the air on the second planting too! Farica, Mick and Bronwyn were specially welcome. Their back fence was part of the site, and will soon be brimming with hop bush (*Dodonea viscosa*). 144 shrubs were planted staked and guarded.

A team of scouts came to help with the third planting. The steep bank of kikuyu has been transformed, extending the established shrubs planted a few years ago. So many plants were given a new home that Emma was able to make a big circle of the empty pots. The children also enjoyed making 'Creeky creatures' and looking through microscopes at bugs from the creek.

Friends of Sacred Kingfisher

A small but dedicated team of hard workers managed to get 250 plants into some hard ground. This is a new area next to the creek. The highlight of the day was the fat little pobblebonk (or banjo frog) that Steph uncovered under the mulch. (see 'Sightings').

Friends of Strathnaver Grassland

We have had two planting days in the Strathnaver Grassland. The first, in June, saw a great mix of young and not-so-young who were so efficient that 200 grass cells were planted and matted in no time. Malcolm, a first-timer was a dedicated planter, ably assisted by his little sister Amy, who was a master of watering.

The second planting day was a real winter one — two brave souls came to join us. Despite the elements, it was a great social morning and 75 tussock grasses were planted and matted along the ridge.

Friends of Westbreen Creek

Two plantings have been held at Westbreen Creek. Two great friendly groups turned out, and thanks to everyone's hard work, this site is going from strength to strength. A huge thank you to

John who is making a fantastic effort to remove litter and weeds from the creek — what a difference it makes. At the two plantings, a total of 780 plants went in, a mixture of grasses, *Juncus* along the edge of the creek, salt bush, pelargonium and *Lomandra*.

Friends of Jacana Wetlands

Just one day has been held here. A small but very dedicated group of five came along, including Kelly, whose enthusiasm was infectious and 380 plants went in.

Friends of Upper Moonee Ponds Creek

Two planting sessions have been held in the Tarnuk. The first was a collaboration between MPCCC and Hume City Council, where an enthusiastic group established 285 plants, mostly shrubs. At the second, 15 people came to plant. An old National Tree Day site was in-filled with more grasses and shrubs. The highlight at both sessions was Julie's wonderful scones with jam and cream for afternoon tea!

Gowanbrae Residents

Four brave and wonderful volunteers joined together for a brief morning of planting on a very wet Saturday. After planting a box of shrubs it was decided to postpone the session for another, drier occasion. Thank you Andre, Rock, John and Audrey the yellow rain maiden for making the effort, we hope to see you again at the next one.

Friends of Lower Moonee Ponds Creek

This new area has great potential to transform the edge of an industrial site into an attractive pocket of riparian vegetation. An energetic group of 12 planted a mixture of marsh plants and shrubs between the bike track and the tidal part of the creek, and Kay, Jo and Aaron took an extra box to plant later. Thank you!



Fungus — Forgotten Flora

At this time of the year, it is common to see apparently fragile fungus poking up between the leaf litter or ground cover. Some of them belie their fragile appearance and can break through packed ground — even through bitumen road surfaces. Some are pretty, some are not, but all are fascinating and often ignored.

These are a few that have been spotted along the creek.

Bird's nest fungus

These bird's nest fungus were discovered by the bush crew at the Union Street site. They are one of the *Cyathus* species. The little 'eggs' or peridioles are packets of spores that get flung out of the 'nest' by raindrops, and can land up to two metres away from the cup. Each peridiole has a tail with a sticky end that attaches itself to whatever it touches first.



For more information about this fascinating fungus, have a look at the Australian National Botanical Gardens website: <http://www.anbg.gov.au/fungi/birds-nest-cannonball.html>



Puff ball

This puff ball, was spotted in Woodlands Historic Park, near the creek. It had pushed up the soil into a low mound before breaking through the surface.

Here are some others...

These three were growing along Westbreen Creek.



This one was growing amongst the mulch at the Kingsford-Smith Ulm reserve.



If you know what any of these are — please tell us as we would love to find out.

What's on?

Frog Census

Melbourne Water is holding another Frog Census – why not get involved? There are two censuses each year, in autumn and spring, although Melbourne Water welcomes frog recordings at any time of the year. They started in 2001 and form the basis of a frog monitoring and frog-mapping program.

All you need to do is to make a short recording of the frogs in your area and send it in to Melbourne Water. So why not have a walk along the creek or visit Jacana Wetlands and listen out for the frogs – you might be lucky enough to meet an endangered **Growling Grass Frog** as the planters at Jacana did on Wednesday 3 September.



Growling grass frog (photo by Lydia Fucsko, www.frogs.org.au)

Have a look at www.melbournewater.com.au/frogs, where there's lots of information about what to do, and you can see the results of previous years' surveys – check out your council area to see what's there, or look to see where particular frogs are found. There are links there to the Victorian Frog Group website (www.frogs.org.au) as well as other interesting links.

Yarra Yabber Tour

The Yarra Riverkeepers are conducting a unique tour, guided by expert presenters, through Yering, Kangaroo Ground and Warrandyte, to discover the delights of our fabulous Yarra River. Learn of its origins and history, and the challenges to flows, water quality, native vegetation and fauna of the river and its catchment. Sunday 12 October 2008 9:00 am to 4:30 pm; \$15 members, \$20 others *Book now to avoid disappointment* Ring Rod 0448 927 720 Full details at: www.yarrariver.org.au.



Grey Headed Flying Foxes — At the bat count

At Dusk, under a moonlit Autumn sky
As clouds coalesce into a semblance
Of a tornado; endangered bats
In a colony, in a canopy
of Eucalypts, wings the colour of night,
circle then depart en masse
into the fading Evening light.

Sandra Simpson wrote this poem after taking part in the bat count at Yarra Bend. Everyone is welcome to join in to help — see Bat Count in Sightings.



Northern Sewerage Project

Good news for the creek

Melbourne Water and Yarra Valley Water are building a major new sewer to provide sewerage capacity for the growing northern suburbs and to virtually eliminate sewerage overflows into the Moonee Ponds and Merri creeks during periods of heavy rain. The brave souls who ventured out to the planting day at Gowanbrae on Saturday 16 August saw just how necessary a new sewer is, with raw sewage spouting out of the 'pop top' and flowing into the creek after just a few showers. (If you see anything like this happening — call the **EPA Pollution Hotline: 9695 2777.**)

It's going to be big!

The \$650 million project is known as the Northern Sewerage Project (NSP) and is being constructed by the John Holland Group. The new system will have 13 kilometres of underground sewer tunnels ranging in diameter from 1.6 metres to 2.5 metres which will be between 15 and 64 metres below ground, and there will be eight vertical access shafts. Two of the access shafts are on Moonee Ponds Creek: one at Vanberg Road, Essendon and another at Bass Street, Pascoe Vale. You may have noticed the work sites being established at these or other locations around the community.

The first stage goes along Moonee Ponds Creek

Stage 1 of the project is the construction of over eight kilometres of deep-tunnelled sewer that will connect the existing sewerage system near Merri Creek at Coburg and the Moonee Ponds Creek at Pascoe Vale. Melbourne Water is responsible for this stage which is due to be completed in 2012.

Victoria, Gemma and Julia will dig the tunnels

The tunnels will be dug by three state-of-the-art Tunnel Boring Machines. Local primary school children have named them Victoria, Gemma and Julia. After boring the tunnel, the machines will line it to create the sewer pipe. Work has started at the Vanberg Road site, where piles have been sunk, and a concrete platform created to receive one of the digging machines at the end of the tunnel.



As part of the construction of the new sewer, Melbourne Water is planning to build an Air Treatment Facility to treat odorous air from the sewerage system before it is vented to the atmosphere. This will be built on a block near the Bass Street site.

Community involvement

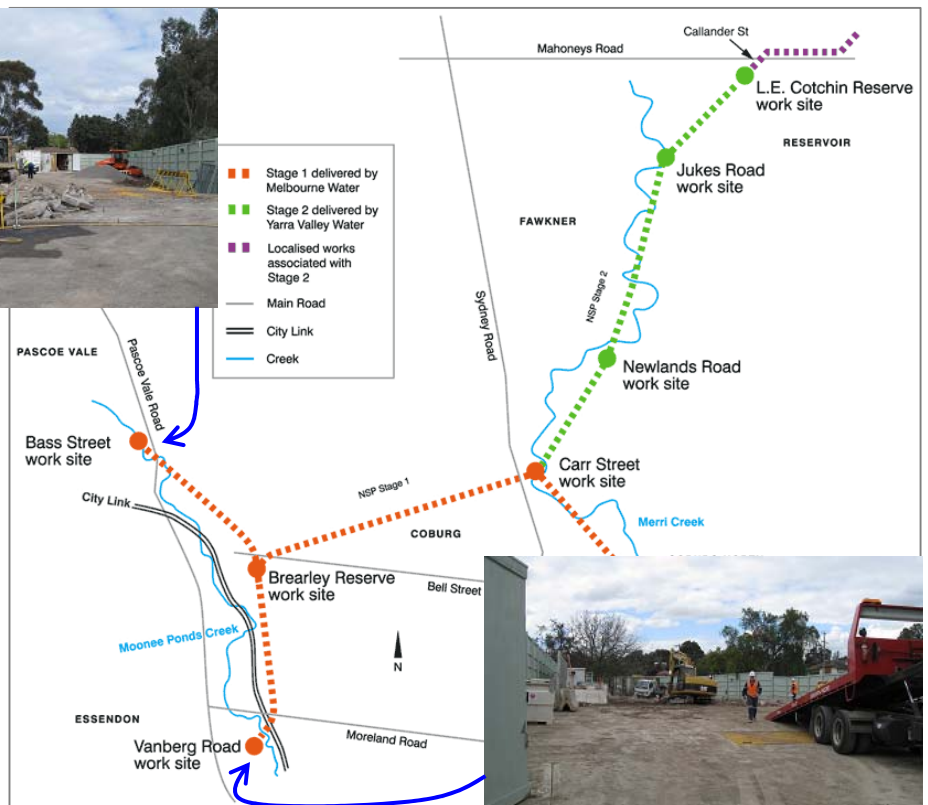
Melbourne Water and the John Holland Group have been holding Community Consultation meetings for each site. These typically involve the residents near the work sites. As a result,

the air treatment facility will not be constructed in the middle of the park at Bass Street as originally intended. Instead, Melbourne Water purchased a house block on Pascoe Vale Road to use for the facility.

Friends of Moonee Ponds Creek and Moonee Ponds Creek Coordination Committee member, Frank Kinnersley, has been participating in these groups to provide input on matters that may affect the Creek or the shared path. Following these discussions, the shared path diversion at the Vanberg Road site is safer and more convenient for users than may have been without user input. The shared path at Bass Street is not directly affected as the work site is on the other side of the creek. Access is still possible along the creek past the Bass Street work site.

Want to know more?

The Northern Sewerage Project website is at www.nsp.net.au. Further information is available from Melbourne Water on 13 1722. If you need to contact the contractors their 24 hour community contact line number is 1800 097 565.

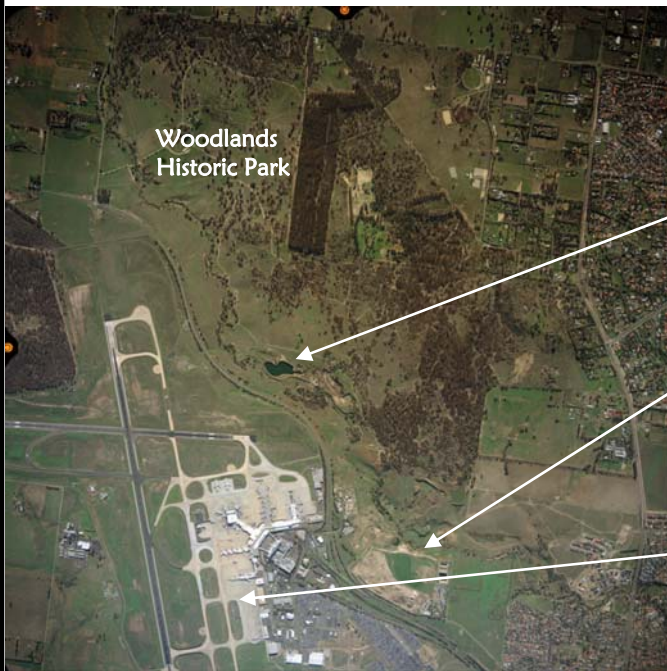


Plan of the Northern Sewerage Project

Pressures on Upper Moonee Ponds Creek

On 13th August I attended the Minister's Community Cabinet visit at Hume Council where I presented our concerns regarding the Moonee Ponds Creek and its catchment to The Minister for the Environment Mr Gavin Jennings.

Below is an aerial photo of the area of most concern to the MPCCC. There are several large landholders/land managers in this area, including, Melbourne Water, Department of Sustainability and Environment, Melbourne Airport, Parks Victoria, Transpacific Industries and private landholders.



All these landholders are currently undertaking numerous major works in this area, mostly in isolation from each other. This is a unique part of the Moonee Ponds Creek, and MPCCC would like to see everyone working together cooperatively, including the community to create and work towards one vision for this whole area.

Within this area, major works currently being undertaken are:-

Enviro Fill Management – have a contract with Parks Victoria to fill two old quarries and the consequent disposal of mega-litres of hyper-saline water. This area will also need to be re-contoured and landscaped once the filling has been completed. Community have been concerned about the materials used to fill the quarries, and Enviro Fill is currently under investigation by EPA.

Transpacific Industries – have recently stopped accepting waste with the recent closure of the landfill site and are now working towards the long term rehabilitation and monitoring of the site.

Private landholder – under a current VCAT order to rehabilitate land adjoining the landfill site and along the Moonee Ponds Creek.

Airport – have current capital project plans to implement engineering works to reduce their pollution impact on water entering the Moonee Ponds Creek.

Melbourne Water – management of land for flood abatement, including vegetation management.

DSE – current managers of land which includes Mitchell-Lasry quarry and adjoins Woodland Historic Park and for which there are discussions/negotiations for this land to be included as part of the Park.

With so much happening in this area, now and in the immediate future, it is the perfect time for everyone to come together and create a plan for the future, especially with such large scale landscape changes being implemented.

There is great angst within the community about all the works happening in this area. The residents for many years have lived with the landfill operation and are extremely happy with its closure, however they want to see that the rehabilitation of the landfill site is completed to world-best-practice standards. Even more, with the major rehabilitation works for the landfill, the residents would like to see the whole of this area cleaned up and rehabilitated.

With the closure of the landfill, a new committee has been formed, the Tullamarine Landfill Rehabilitation Advisory Committee (TLRAC), which is currently working through the Terms of Reference. For further information, email me, Bronwyn Riddell at bronwyn@mpccc.org.

Citylink Creek Connections



A busy time for the Citylink Creek Connections Program

For **World Environment Day**, Fay Ball an Indigenous Interpreter and I presented to four groups at the **Melbourne Water River Health Youth Conference** at Flemington Racecourse. Our program Connecting People Plants and Places was well received by the schools' teachers and even Chris Chesterfield, Waterways General Manger, and Anna Zsoldos, Regional Grants Administrator, joined in one of the activities.



The Community Learning Project with the Kensington Neighbour House and Kensington Management Company (KMC)

has been a great project with a six-week learning block about gardening and the environment being delivered to over 26 residents.



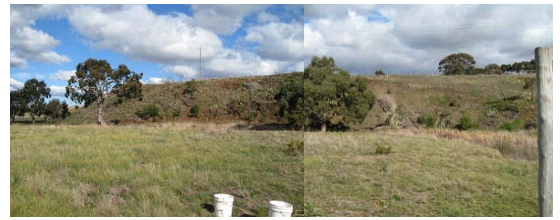
One of the highlights for all was a visit into the new KMC community garden in Kensington where volunteers learnt how to build trellises, prepare soil and to plant out seeds.

MelAir Planting Day

MelAir getting down and dirty!

On Friday 8th August, Melbourne Airport staff in partnership with MPCCC undertook restoration, and revegetation works along the Moonee Ponds Creek, on the northern airport boundary, at Marker Road Tullamarine. This event followed a donation to the MPCCC from Airport Management, Australia

Pacific Airports (Corporation) Melbourne (APAM) in 2008.



The site before we started



Annette welcoming us to her country

Not just planting

It was a full and enjoyable afternoon. The event started with a welcome to country by local Aboriginal elder, Annette Xiberras, who thanked everyone for being part of helping to restore the land. Then, apart from planting, there were Indigenous tools and artefacts to explore and touch, and a range of 'bush tucker' to taste. Melbourne Water Waterwatch team also came along to show some of the things that live in the creek, and at the end of the afternoon, after all the hard work, there was a delicious afternoon tea. APAM, Qantas, and other airport staff participated in the activities and the beginnings of a corridor of trees and shrubs was established along the creek.



They want to do more

Melbourne Airport intends to continue support of local projects, including adopting a site along Moonee Ponds Creek to restore, revegetate and manage to help foster long-term relationships with the local community.

It's part of the bigger picture

The Moonee Ponds Creek is located on the Melbourne Airport boundary. APAM is committed to minimise the

impact of Melbourne Airport operation on the natural environment as outlined in the Melbourne Airport Environment Strategy. Since 1994, stormwater quality has been regularly monitored, and APAM has made consistent improvements in water quality through working with airport business partners, off-site businesses in the catchment, Melbourne Water and the Commonwealth Department of Infrastructure.

For more information, see www.melbourneairport.com.au/about_airport/environment.asp



More Citylink Creek Connections



I have been working with Debney Meadows Primary School connecting the students and teachers to the Moonee Ponds Creek at Royal Park Trin Warren Tamboure Wetland, and Woodlands Historic Park.

This program is based on an enquiry learning approach which has been a great experience for all. The children took photographs of things they saw around them, to help them focus on their environment.

We thank Sam from Waterwatch who spent time exploring macro-invertebrates he gathered from the creek and wetlands.

We also thank Hayden, John and Suzie Indigenous rangers from Parks Victoria for joining us at Woodlands Historic Park. They helped the children to connect to the land and its history through sharing their culture.



MPCCC would like to thank **XL Colour Digital** for kindly printing this edition of *Ponderings*. Staff and clients of XL Colour Digital spent a great afternoon with us revegetating an area in the lower reaches of the creek.

It is printed on FSC Certified recycled paper from mixed sources, to ISO 14001.

XL Colour Digital
28-32 Bruce Street
Kensington Victoria 3031
Telephone: 03 9372 5111
Facsimile: 03 9372 5888
Email: digital@xlcolour.com.au

