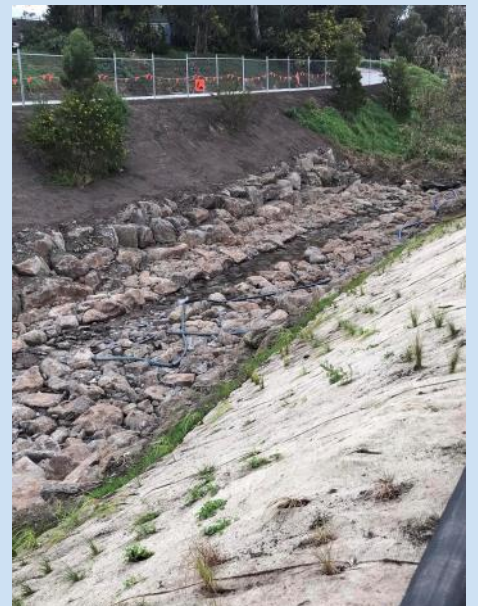
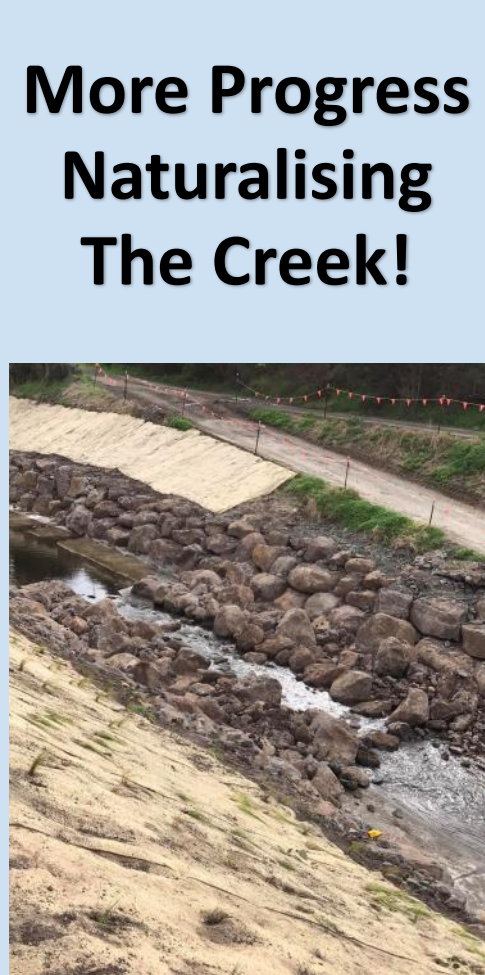




Ponderings

Seasonal newsletter of the
Friends of Moonee Ponds Creek
Spring 2023 | Issue 80

advocate educate interpret participate rehabilitate revegetate



**More Progress
Naturalising
The Creek!**

Creek Naturalisation Continues

There is new money to extend the area covered by the Reimagining MPC project, extending downstream the area of concrete to be replaced by rocks and riparian plantings. This a great outcome due to the efforts of Melbourne Water and the Chain of Ponds Collaboration.

We report on our usual range of council news, including what is next in store for Nursery Corner now that the fences have finally come down.

The new fences near Holbrook Reserve have generated controversy, with cyclist safety butting up against the aesthetic aspect of the fences. Fences are something we are going to have to get used to with new regulations requiring five metres between any new path and the creek embankment. There just isn't enough room!

Litter has becoming an increasing problem along the creek, with more clean-up days being required to deal with the issue, we report on the latest clean-up days to deal with the problem.

David Widdowson, Editor

Thanks to Kaye Oddie, Rachel Lopes, Nina Franceschi, Neil Sutton, Charlotte Napper and Kelvin Thomson for their assistance with the production of this issue.

Cover images by Joanne Dietrich and David Widdowson.

CONTENTS

(Click on page title)

- [Naturalisation Project.....](#) 3
- [Chain of Ponds News.....](#) 4
- [Clean-up Team Update....](#) 5
- [Moonee Valley News.....](#) 6
- [Merri-bek News.....](#) 7
- [Farewell & Thanks](#) 8-9
- [Other News.....](#) 9
- [Cyclist Safety Fences.....](#) 10
- [Sightings.....](#) 11
- [John Kavanagh OAM.....](#) 12
- [Spring photos.....](#) 13
- [MPC History Page.....](#) 14
- [FoMPC News.....](#) 15

GUARDIAN STORAGE

Call 9374 1500

Get a quote

LOOKING FOR STORAGE?

Guardian Storage Essendon offers everything from boxes and packaging to business storage and household storage solutions. Want to know what our self storage costs? Call us to find out more about our full range of storage spaces for rent to see which of our storage options suit your storage rental needs.

Household storage



Need to declutter, moving house or renovating? Self storage is the perfect solution. From furniture to clothes our secure lock-up storage units ensure your items will be safe and sound.

Business storage



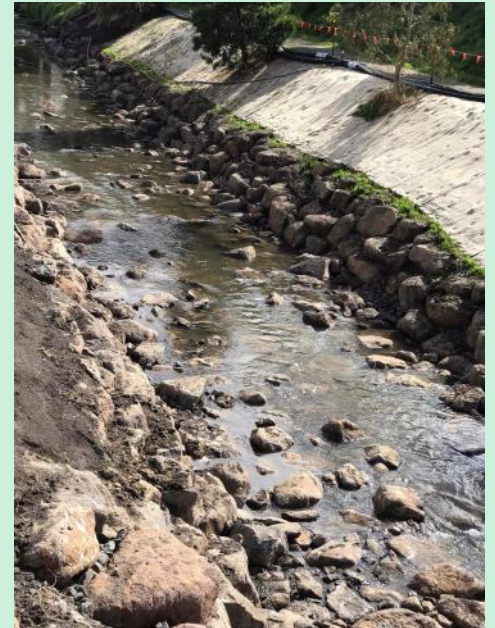
Guardian Storage Essendon provides flexible business and document storage solutions for storing your commercial stock and business records. Client files or excess and seasonal stock, we have a suitable storage solution to streamline your business and free up space.

Location / Trading hours

Guardian storage Essendon is located on Pascoe Vale Road, behind PETstock and Good Life Health Club.

Weekdays: 8:00am – 5:30pm
Weekends: 9:00am – 4:00pm

\$2 million more promised for Naturalisation Project



Photos above by Joanne Dietrich. Work is progressing on putting rocks down on top of the concrete at the start of the area. At the time of publication, rocks had extended past the Margaret Street footbridge.

Project Update

The Australian Government is investing over \$2.1 million to improve the health of Melbourne’s Moonee Ponds Creek between Strathmore and Pascoe Vale.

The project will transform an additional 200 metres of the creek between Oak Park and Lebanon Reserve, replacing the open concrete drain with ponds, trees and rockwork, restoring the creek’s natural qualities.

Delivered by the Chain of Ponds Collaboration, the project will improve the habitat of freshwater species, including the threatened growling grass frog, and provide the community with better access to nature.

The project will also celebrate the creek’s ongoing connection with Wurundjeri Woi-wurrung Traditional Owners.

Tanya Plibersek, minister for the environment:

“We want to leave nature better off for our kids and grandkids, and that means repairing damage to our environment and better protecting it for the future.

“That’s why we’re investing \$200 million in projects to revitalise our urban rivers and creeks. We want to support the groups on the ground who understand the needs in their community and are working to better manage and restore their local environment.”

A 360-metre section of the concrete-lined Moonee Ponds Creek is being transformed into a more natural, enjoyable community space. We’re doing this by:

- removing the concrete walls along both sides of the creek and replacing this with rockwork.
- covering the concrete base of the channel with rockwork to create a meandering creek, to slow down flows and give it a more ‘natural’ look and feel.
- planting 43,000 native trees and shrubs.
- creating new shared paths and a new bridge.
- constructing a pond and terracing near Oak Park Reserve.

The re-naturalisation works will result in:

- a more appealing creek-side environment where people can interact with nature in a cooler, healthier environment.
- improved water quality and waterway health by slowing water flows.
- improved biodiversity and habitat for native species.
- activation of open space and better active transport connections for improved community use and recreation in the area.

Comprehensive flood modelling has been undertaken to ensure that there will be no increased flooding risk to the local community or downstream users as a result of this project.



CHAIN OF PONDS

Transforming the Moonee Ponds Creek

By Rachel Lopes



The Chain of Ponds Collaboration warmly welcomes Troy Pedersen as our Aboriginal Liaison. Troy will be working to uncover and share the First Nations story (and more) to the Moonee Ponds Creek, working closely with Wurundjeri Woi-Wurrung Cultural Heritage Aboriginal Corporation. Troy joins us all the way from Mparntwe/ Alice Springs and has started meeting people and having chats up and down the creek. He has already taken part in the Kensington Planting day with the FoMPC. Please say hi and help Troy feel welcome if you see him on your patch of creek.

We had delightful news at the beginning of August when The Hon. Tanya Plibersek and Peter Khalil MP announced \$2.1 million to improve the health of Moonee Ponds Creek between Strathmore and Pascoe Vale. A further 200+ metres of naturalisation of the creek, continuing the great work that's well underway in Oak Park/ Strathmore.

A shout out to all Chain of Ponds' partners for continuing to transform Moonee Ponds Creek. Special thanks to Department of Climate Change, Energy, the Environment and Water for the funding, Greater Western Water for being our host, Melbourne Water for delivering the transformation on-ground and Merri-bek City Council and Moonee Valley City Council for being co-delivery partners on this awesome project.

Chain of Ponds is working closely with Melbourne Water to deliver an Immersive Trail as part of the Reimagining Moonee Ponds creek project. The Wurundjeri Immersive Trail will be a collaboratively designed project of art installations and/ or interactive signs along Moonee Ponds Creek, showcasing the rich Aboriginal culture of the area through interpretive art and media such as sounds, video, sculpture and signage. Project planning begins in September and we can't wait!



Litter Clean-ups by Neil Sutton

- Westbreen Creek, Pascoe Vale: 18th June – 63kg of rubbish, 1,214 items (15 people)
- MPC, Stubbs Street, Kensington: 25th June – 2,064 items (7 people)
- MPC, Cross Keys Reserve, Essendon: 2nd July.
- Five Mile Creek, Essendon: 6th August – 4,023 items (17 people)

Coming up:

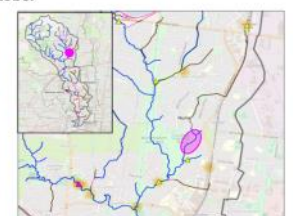
- MPC, Stubbs St, Kensington: 3rd Sept, 2- 4pm
- Otway Crescent Drain: 9th Sept, 10 – 11:30am
- Westbreen, Pascoe Vale: 24th Sept, 10-11:30am
- MPC, Strathmore area: TBA

Please Note:

- Litter on the Northern golf course is now being audited by Melbourne Water on a monthly basis, this litter accumulation point is linked to Glenroy Shopping precinct via a long stormwater drain and is a key *Chain of Ponds* litter hotspot.
- Melbourne Water has done an initial clean of Otway Crescent Drain, a key accumulation site linked to Roxburgh Park shopping and transport precinct (another major litter hotspot). Community cleans will commence at this site in September.
- Our pilot litter education project is to launch on Boundary Road in Pascoe Vale in September - this project aims to educate community members on why its important to manage street litter more effectively. We will monitor the impact of this project through continued litter audits downstream on Westbreen Creek. Get in touch if you want to be involved.
- As always, if you would like to be part of the solution to reduce litter from our streets reaching our creek get in touch: neil.sutton@gww.com.au

V4U Day – Otway Crescent Drain Clean

- V4U Day is VU's largest annual community event, in which VU students, staff and alumni take part side-by-side volunteering for different community projects across the western suburbs of Melbourne.
- This year V4U Day will take place on **Friday 27 October**



Litter Clean-up Team Update

By Kelvin Thomson



The Moonee Ponds Creek Litter Clean-Up Team continued its clean-up work along the creek during winter, bloodied but unbowed by the cold weather.

On Sunday 18 June we returned to the Westbreen Creek, which is of course a tributary of the Moonee Ponds Creek. The clean up was well supported. Neil Sutton then uploaded data from this clean up, showing that in total we have removed over 5,000 bits of litter from the creek!

Unfortunately, the litter keeps coming back. The next step is an education program focused on changing behaviour in the streets. Our litter reduction project is focused around West Street and Boundary Road, at the top of the stormwater drain linked to Westbreen Creek East Branch.

On Sunday 25 June we supported a Litter Clean-up at the Kensington section of the creek. On 2 July we did another Litter Clean Up at the Cross Keys Reserve, Essendon. On Sunday 6 August we did another Clean Up at Five Mile Creek in Essendon. Neil Sutton's data analysis of this clean up showed that polystyrene is reducing over time, however the volume of soft plastic is still very high.

The Moonee Ponds Creek Litter Clean Up Team has its own [Facebook Page](#) which you can join, in order to be kept informed of future clean ups. Thanks to Logan Shield and Neil Sutton for their great organizing work, and to all the local residents who are supporting our initiatives.

Of course, the litter problem is as much a question of prevention as it is about clean-ups. Quite a lot is happening.

Globally, the Second Session of the Intergovernmental Negotiating Committee—working on an internationally legally binding instrument on plastic pollution—took place in Paris. It authorized the Chair and Secretariat to produce a draft of a Treaty to take to the next Session, which will be in November in Nairobi.

Australian Federal and State Environment Ministers agreed at a National Meeting to introduce new rules to cut packaging waste and boost recycling. The rules will include mandatory packaging design standards and targets.

In Plastic-Free July, we were urged to keep our reusable coffee cups, and actually use them, rather than buying throwaway takeaway cups. Better yet, sit down and drink the coffee in a proper cup!

Melbourne Water has undertaken an initial litter clean of the Otway Crescent drain in Westmeadows, just off Barry Road. This site contributes heavily to plastic litter in the Moonee Ponds Creek, as it links to major shopping and transport areas in Roxburgh park via a long stormwater drain.

Museums Victoria is now selling bamboo alternatives to plastic straws, dinnerware sets, snack bowls and the like.

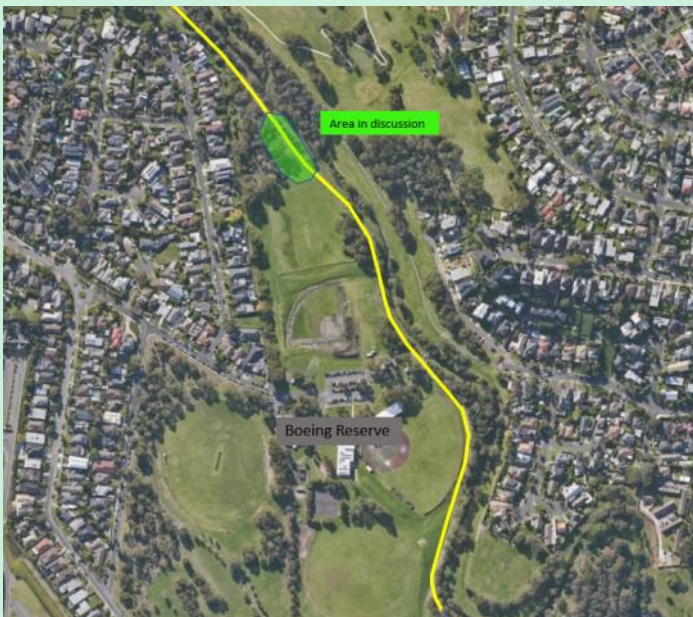
Locally, the Moonee Valley Council's Transfer Station, located at 188 Holmes Road Aberfeldie, is now accepting soft plastics for recycling. Soft plastic dropped there will be collected and processed by APR Plastics, a Victorian based recycling company.

The plastic challenge remains huge. Less than 10% of the plastic ever produced is recycled. More than 90% of all birds and fish are believed to have plastic in their stomachs. New research shows that the plastics Australians consume in a year produce more greenhouse emissions than a third of all cars on our roads. And if we continue on our current path, Australia's greenhouse emissions from plastic will more than double by 2050. Australia leads the world in per capita generation of single use plastic waste, amounting to approximately 60 kilograms per head per year. (Minderoo Foundation research).



Nursery Corner Update

The fences are finally all down at Nursery Corner and the masterplan has been approved. Hopefully work can start soon on fulfilling the next steps, but that depends a lot on when funding can be arranged. Meanwhile, it's good to be able to walk around an area that has been shut off for so many years, including the frog bog. No decision has been made on the car park, so still lots of places to park.



New Boeing Path by Nina

There is a new track being put in, from north of Boeing Reserve to Horseshoe Bend (yellow section above). FoMPC wants to keep fencing to a minimum, however Melbourne Water will not allow new paths less than five metres from steep embankments unless there is a fence. That's why a few fences are going up along the creek.

The last fence built at Ormond Park, had 10mm x 75mm gaps in the panelling which was difficult to see through. Council have confirmed they are working with manufacturers to increase the gaps to 25mm x 150mm. This will significantly improve our ability to see through the panelling.

Council also said they can paint the fence; we suggested a green than blends in with the environment. Council said they will add reflectors to the fence to avoid bike riding accidents.

Unfortunately, Council needs to adhere to state regulations for height and other specifications, so we don't have much of a choice in the matter. However, working with Council will help to improve the situation.



Strathnaver Reserve Upgrade

The project scope has been finalised and the following agreed outcomes remain:

- The redundant 1.1m high galvanised chain mesh fencing along the northern side of the reserve will be removed.
- The fence line in the south-east corner will be brought in to create more passive open space along the trail.
- Off-set tree planting (up to nine trees and/or additional vegetation – i.e. shrubs) will occur.
- The redundant wooden light pole in the south-east corner will be removed.
- The hazardous concrete pit in the south-east corner will be repaired/renewed.

A small positive scope change is the extension in height of two sections of fencing - this is to further protect walkers, runners and cyclists using the trail.

The first section will proceed. This is in the south-east corner of the reserve. The fence line will not alter to what was previously discussed, however the height will be 4m instead of 1.2m. The two sections of existing 4m high fencing either side of this area will effectively be joined to ensure over-kicked soccer balls or over-hit cricket balls cannot leave the sports field and onto the trail.

The second section is being explored and may proceed. This is in the north-east corner of the reserve. The fence line will not alter and no trees will be impacted. In this section, the height of the fence will remain 1.2m, however some additional 800m fence extensions may be installed between the various trees to bring the fence height up to 2m.

It is expected works will commence in early-October 2023 with an anticipated completion by April 2024.



Merri-bek
City Council

By
Charlotte
Napper



John Street, Oak Park

The property purchased by council at 2A John St, Oak Park will be converted to open space! At the May council meeting, Council voted to retain the land for open space, demolish all structures and clean up the site. We will be able to improve access to the walking trail and extend the revegetation area.

We are preparing a landscape plan for community consultation and will be engaging with the local community later this year. We anticipate commencing demolition works in the next few months.



National Tree Day, Gavin Park

Our National Tree Day event at the Gavin Park wetland, Pascoe Vale was a great success! Almost 100 community members joined us to get 1500 indigenous plants in the ground and share in a BBQ.

Since the wetland project completion in 2022, the vegetation has established well, providing valuable habitat for our urban birds and frogs. The newly planted areas will extend and enhance the habitat value and amenity benefits as they grow.



Nature Stewards Graduation

We have been pleased to congratulate our latest cohort of Nature Stewards on their graduation in June. Nature Stewards is facilitated by the *Victorian National Parks Association*, and provides a 10 week environmental education introductory course. The program connects curious residents with their local environment, and supports them to become actively engaged environmental champions. Students learn from experts on conservation land management, local flora and fauna, citizen science, environmental volunteering and nature advocacy.

This year, Merri-bek co-hosted the Nature Stewards program in partnership with Moonee Valley Council with site visits along the Moonee Ponds Creek. Well done Nature Stewards!



Citizen Science

Throughout Spring Council will be encouraging residents to participate in 2 citizen science events:

[The Aussie Backyard Bird Count: 16 – 22 October](#)

[The Great Southern Bioblitz: 24 – 27 November](#)

These events are a great way to get to know the plants and animals living in your own backyard (or local park) and contribute data that helps build an understanding of what's happening in our local environment and beyond.

It's easy to participate using your smartphone while out walking along the creek – we look forward to seeing what you spot! Follow the links for more information.

Farewell and Thank-you!



Michelle Gooding — MVCC by Nina

Michelle Gooding has resigned from her position at MVCC after 15 years in the role. Michelle has quietly advocated for the MPC throughout all these years with her most recent project being the installation of bollards along Mascoma Street to protect our precious parkland.

Michelle is most proud of increasing the Moonee Valley Council conservation portfolio from 20 to about 100 hectares. She has gone from a team of one, to a team of two - Milly and Steph are great operators and the place is in good hands with them. And bringing the term **Ecology** into Council's highest level documents including MV2040 and the Open Space Plan.

The sites along Moonee Ponds Creek have been challenging but also rewarding. Revegetation Projects like Boeing Reserve and Travencore and everything in between have been good fun. There are some interesting plants snuck in too. She has a soft spot for Napier Park with the daylighting of the old creek project.

As a farmer she now has 112 acres of old 'clapped out' sheep grazing country (previously Box iron bark forest) that is slowly regenerating with 40 metre wide shelterbelts and a good cover of native grass pasture. She has a small flock of Romney Marsh Sheep (soon to lamb) for fibre production, a small flock of Australian Heritage Angora Goats which are a Rare Breed conservation project and many free range quails for egg production. She is also growing a plant crop for Monarch butterfly caterpillars which are used for education programs.



Ryan van den Hove — Melbourne Water

The wider (and longer) Moonee Ponds Creek community regrettably says 'Farewell' to **Ryan van den Hove**, long-standing Melbourne Water Waterways and Land Officer for the Hume area. Over six years, we have enjoyed and appreciated Ryan's knowledge, efficiency and equanimity in his involvement in many aspects regarding the Creek, as well as through the Chain of Ponds Collaboration, Friends groups and councils. It has been a pleasure to have him part of our community!

On his part, Ryan lists as highlights of his time along the Moonee Ponds Creek: Managing two of Melbourne Water's Sites of Biodiversity Significance at the Tarnuk and Jacana Retarding Basins; having the opportunity to plan and see the completion of a successful revegetation project along the Creek through Woodlands Historic Park and planning for the revegetation along the Creek environs of the former Mitchell Lasry Quarry, Greenvale (hopefully to start this coming summer).

But life moves on and Ryan and his partner have moved to Geelong, where he has taken up a similar role closer by in Melbourne Water's Upper Werribee Catchment. But he says he will look back with interest at the Moonee Ponds Creek and the progress of its ongoing projects.

We wish him all the best and once again, say 'Thanks' Ryan!

by Friends of Moonee Ponds Creek

Farewell and Thank-you!



Gavan O'Neill by Kelvin Thomson

The Friends of Moonee Ponds Creek has been advised that Gavan O'Neill is moving on from his senior position at Melbourne Water. Gavan has played an important part in the life of the Friends, and we have played an important role in his.

When the Moonee Ponds Creek Co-ordination Committee was established in 1996, to breathe life into the Moonee Ponds Creek Concept Plan, we appointed a Co-Ordinator. It was a new role, light on detail, and we appointed Gavan, a young man back then, giving him not much instruction other than to make the Concept Plan a reality.

Gavan approached the task with flair and commitment. His energetic approach saw the flowering of not just the Friends of Moonee Ponds Creek, but of many Neighbourhood friends groups, dedicated to protecting and enhancing their own little part of the creek. Gavan organized regular bike rides along the length of the creek to give us a better appreciation both of its changing character as it makes its way downstream, and also the way in which upstream actions have downstream consequences.

It was a time of great strides forward for the creek. We were sorry to lose Gavan, which was my fault as I poached him to become my adviser after I was appointed Federal Shadow Minister for the Environment in 2001. Gavan provided excellent research to support my policy initiatives in areas such as environmental flows for the Murray-Darling Basin, increasing the renewable energy target to tackle climate change, and banning single use plastic bags.

After that he went on to become an adviser to John Thwaites, Victorian Deputy Premier and Minister for Water. From there he moved to Melbourne Water, where he has been highly successful and well-regarded. At all times he has remained a friend of the Moonee Ponds Creek.

We don't know where he is headed now, but we appreciate his friendship and support over many years, and hope our paths continue to cross from time to time.

Other News



Boeing Reserve Land Mystery Solved

In regards to the question posed in Winter Ponderings concerning the land adjacent to Boeing Reserve (shown above in Red). After many months of searching and waiting for responses, Nina found out it is owned by VicRoads.



Community Planting – Kensington by Kaye

A great effort on Saturday 5th August, when many joined the Friends of Moonee Ponds Creek infill planting along the lower Creek in Kensington. Mat-rush/Lomandra and Flax-lily/Dianella as well as some shrubs were planted – further enhancing the viability, biodiversity and habitat values of the embankment's vegetation. Thanks to everyone and thanks to Melbourne Water for their *Liveable Communities, Liveable Waterways* grant.





Many of you will have noticed new fences going up along the shared path just before the beginning of the wide channel creek in Brunswick, near Holbrook Reserve. Melbourne Water has a new policy that any new sections of track have to be at least five metres from the creek embankment, otherwise a fence has to go up to stop cyclists and pedestrians going into the creek.

So, how risky is riding along the Moonee Ponds Creek? It's rather hard to find out how many shared path users have gone over the embankment, although Nina was there when an ambulance was attending a cyclist who broke his pelvis going down an embankment into the creek. I'm sure many of us have heard similar stories, so what can be done to improve public safety?



Are fences the only answer? Obviously signs can be used to indicate dangerous areas, such as these near the Gaffney Street footbridge. They indicate a dangerous section that should be ridden slowly.

And are fences a safe option, given the damage that could be done running into one? I suppose it would be less dangerous than going off the track down into the creek. It is noticeable that the cyclist in the top photo is riding away from the fence.

Many people are upset about the appearance of the new fences and are concerned about how many more will appear over the next few years along the path, given that there is only a limited amount of space and the creek is meant to appear to look as natural as possible. Council is also planning to move the path away from the creek where possible and over time, but there isn't a tremendous amount of room in places!

Frank's Suggestions:

- For new sections of shared path, move the path away from plants and obstacles, so users have the possibility of moving off the path when stopping, so overgrown plants do not interfere with the path use.
- Where feasible, locate any fencing as far as possible away from the path, so it reduces visual intrusion and gives users the ability of moving off the path when stopping.
- Fence ends to be splayed away from the path to limit user collision possibilities, to reduce potential injury on contact.
- New plantings are located away from the path, so with growth they do not interfere with sightlines along the path or provide a maintenance legacy for Council. The ground surface immediately adjacent to the path should be flat, smooth and solid.



Frank is a keen cyclist and member of the Moonee Valley Bicycle Users' Group.



Superb Fairywren by Anna



Rainbow Lorikeets by Anna



Wood Duck by Maurice



Tawny Frogmouth by Caroline

Sightings

Images by
Maurice Austin,
Anna Lanigan and
Caroline Mazurkiewicz



Welcome Swallow by Maurice



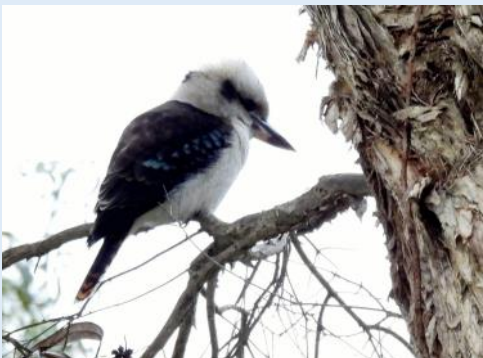
Tawny Frogmouths by Caroline



Wood Duck by Maurice



Tawny Frogmouths by Caroline



Laughing Kookaburra by Anna



Kangaroo by Anna



Starlings by Maurice



Welcome Swallow by Maurice



Rainbow Lorikeet by Anna



Noisy Miner by Caroline

John Kavanagh, OAM

Yes, our dear leader was given an Order of Australia Medal in the latest Honours List. Here are the reasons for the award:



For service to local government, and to the community.

Moreland City Council

- Mayor, 2011-2012, and 2017-2018.
- Councillor, 2004-2020
- Councillor Responsible for Recreation and Leisure.

Community

- President, Friends of Moonee Ponds Creek, since 2021.
- Judge, Lions Club Youth of the Year Competition.
- Initiated, Inaugural Moreland Relay for Life, Cancer Council Victoria, 2012.

Pascoe Vale Girls College

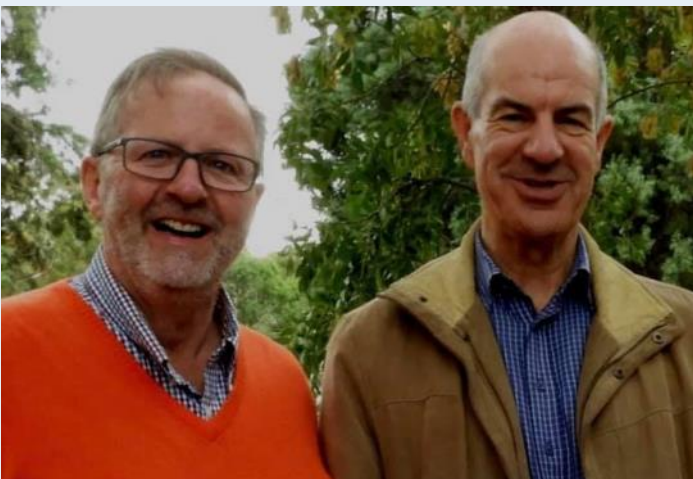
- Co-opted Community Member, School Council, 2006-2019.
- Treasurer.
- John Kavanagh Ambassadorial Award named in his honour to student who has contributed most to the community.

Education

- Teacher, St. Matthew's Catholic Primary School, Fawkner North, since early 2000s
- Primary School Teacher, Acting Deputy Principal, Mathematics Leader, Religious Education Leader, Various schools, for over 35 years.

Awards and Recognition include:

- 15 Year Service Award, Municipal Association of Victoria, 2019.
- On behalf of Moreland City Council, Local Government Initiative of the Year: 'Allocation and Use of Sporting Facilities, Grounds and Pavilions Policy', Victorian Sports Awards, 2016.
- 10 Year Service Award, Municipal Association of Victoria, 2014.





Spring!

Images by
Maurice Austin



MPC History Page — Flooding leads to the Esslemont Reserve

Esslemont Reserve in Pascoe Vale was created in 1962 when a kink in the creek was removed and the diversion lined with concrete and bluestone pitchers, making it one of the first sections of creek to be concreted.

From the MMBW book (1981):

Between 1940 and 1958 a strip of land up to 40 feet wide was eroded from the outside of a bend of Moonee Ponds Creek immediately downstream of the Gaffney Street Footbridge in Pascoe Vale. By 1958 the east bank had migrated to within a few feet of the back fences of properties in Somerset Street.

Quite understandably, the Board of Works received a number of requests from the property owners for protection works to be undertaken.

Orders were issued by the Board of Works for improvement works to commence in December 1961, and the job was completed during 1962.

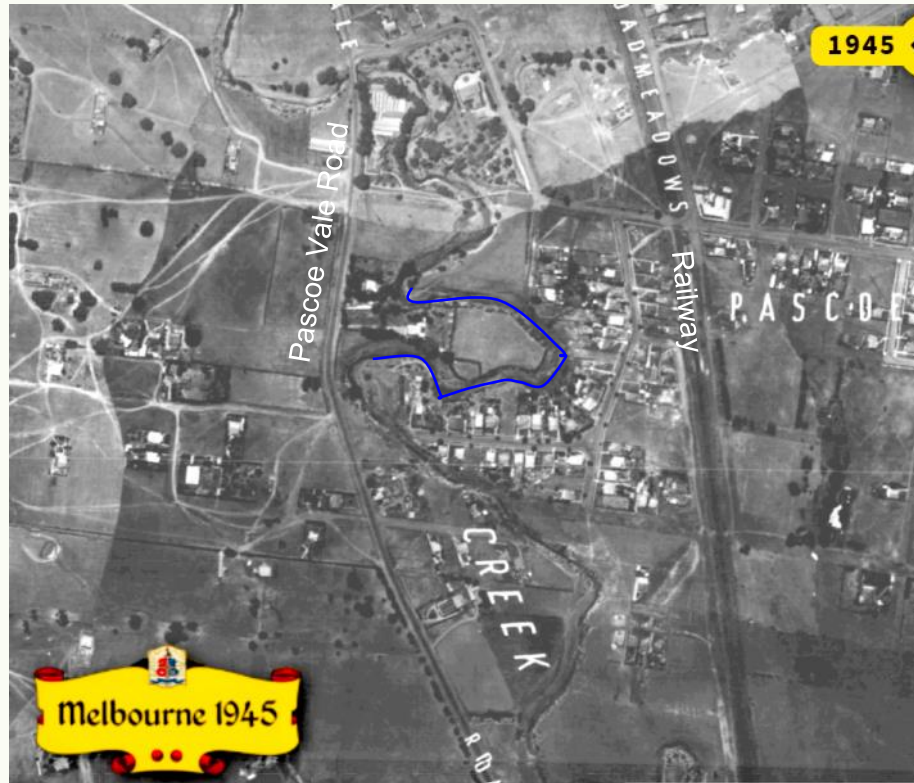
The creek was realigned, moving it away from the eroded bank and property fences. An embankment was constructed along the eastern side of the new channel and the depression between the embankment and the old bank of the creek was gradually filled.

The invert of the new channel was not concrete lined, but the lower six feet of the banks were pitched, with the bottom pitcher resting on a toe stone below the level of the invert.

Within four years of the completion of the works, considerable quantities of silt had been deposited in the new channel and weed growth on the depositional material was prolific,

The siltation was almost certainly caused by ponding during flood flows, the watercourse downstream of the improved section being of inadequate capacity. The lined section of the creek was subsequently cleaned out and the weed growth and silt removed from the banks.

In late 1975, the section was further modified when it was incorporated into the improvement works undertaken between Gaffney Street and Margaret Street. The invert was concrete lined, the bluestone pitchers were replaced by concrete, and an access ramp was constructed.



Melbourne 1945 view with the relevant kink shown in blue.



The current view of the area around Esslemont Reserve.





Friends of Moonee Ponds Creek Inc

PO Box 1092, Moonee Ponds, Victoria 3039

www.mooneepondscreek.org.au

friends@mooneepondscreek.org.au

FoMPC News by Carolyn Layton, minutes secretary



Lionsville Redevelopment

According to the Manager of Planning at Moonee Valley, a decision will be made at the council meeting on 12th September. John noted our dissatisfaction “all the way through” the process undertaken by Moonee Valley Council. He described how information from the Council on matters, such as whether a copy of updated plans was available, whether there will be a charge to obtain a copy, when a decision will be made, depended on which council officer was contacted.

A copy of the updated plans was obtained by Richard. According to John it is difficult to see any substantial changes. He noted some differences in the presentation but not the substance of the plans, with the same number of units being proposed. The development will still have major impacts on the Creek corridor. [John suggested that individual members contact the Moonee Valley Council with their concerns and state that they reject the proposal, before the council meets on September 12th.](#) He has sent out a separate email to the membership with details, including the email addresses of Councillors.

Other Business

• Fencing Work at New Track in Boeing Reserve

Frank reported that separate sections of fencing had begun to appear along the shared path along the Creek, mostly in the Moonee Valley council area. There are now plans for fencing in Boeing Reserve, where the new path is less than five metres from the Creek. Frank reported that the longer term MV plan is to rebuild the path and move it away from the Creek where possible, so that fencing is not required. However, it has been noted that there are fence sections which have appeared without path rebuilding and he suspects this is when community members have reported an issue. Joan pointed out there are some very steep sided and even collapsing sections close to the creek that do need some treatment. Richard suggested that a council collaboration on this issue was needed. Kaye extended this idea and suggested this was an opportunity, for example, the Chain of Ponds Collaboration to look at what the design regulations and guidelines actually are and to come up with recommendations for a consistent whole catchment approach.

• **Future Grant Applications** Richard reported that we have only one active grant application at the moment; the Kensington Embankment project. He noted that there are opportunities for Landcare Vic grants, through Melbourne Water and also Community Grants through councils. He urged members to think of a project and step up to manage a grant. Some discussion followed on a possible art project suggested by Joan.

• **Strathmore Men’s Shed** John reported that Nina had found out that Strathmore Men’s Shed want to place a second shipping container on the Nursery Bend open space. Questions were raised about consistency with the recently approved Nursery Bend Masterplan and the encroaching impact of the Men’s Shed infrastructure, as well as parking and access issues. Apparently, there is no current funding for implementing the Masterplan. John will follow up the 2nd container matter for the Men’s Shed with Nina.

Join the Friends of Moonee Ponds Creek for \$20 per year

Help protect and enhance the Moonee Ponds Creek’s natural environment. For information and to join, go to mooneepondscreek.org.au and complete the membership form, or write to PO Box 1092, Moonee Ponds.

| CALENDAR | Event and Location: | Contact/ Link |
|---|--|--|
| Monday, October 16 th , 6.30pm | FoMPC AGM and General meeting, at Sam Merrifield Library | mooneepondscreek.org.au |

Your Contributions to Ponderings are welcome!
Please send your images and stories to fompc.ponderings@gmail.com